

Genie Z-51/30J 18M Articulated Boom Lift Diesel

Performance

Measurements

	US	Metric
Working height max.	57ft 8in	17.59m
Platform height max.	51ft 2in	15.59m
Horizontal reach max.	30ft 9in	9.37m
Up and over clearance max.	24ft 3in	7.39m
A Platform length	2ft 6in	0.76m
B Platform width	6ft	1.83m
C Height - stowed	7ft	2.13m
D Length - stowed	24ft 11in	7.58m
E Width	7ft 6in	2.29m
F Wheelbase	6ft 8in	2.03m
G Ground clearance - center	1ft 3in	0.37m

Productivity

Lift capacity max. - unrestricted	500lb	227kg
Platform rotation	160°	
Jib length	5ft	1.52m
Vertical jib rotation	135°	
Turntable rotation	355°	
Turntable tailswing	0in	0cm
Drive speed - stowed	5mph	8km/h
Drive speed - raised	0.61mph	0.98km/h
Gradeability - stowed	45%	
Tilt sensor activation (front to back/side to side)	2.5° - 4.5°/4.5°	
Turning radius - inside/outside	5ft 6in/14ft 9in	1.68m/4.50m
Tires (foam-filled)	315/55 D20	

Power

Power	Diesel	
Auxiliary power unit	12V DC	
Hydraulic tank capacity	24gal	90.9L
Fuel tank capacity	17gal	64L

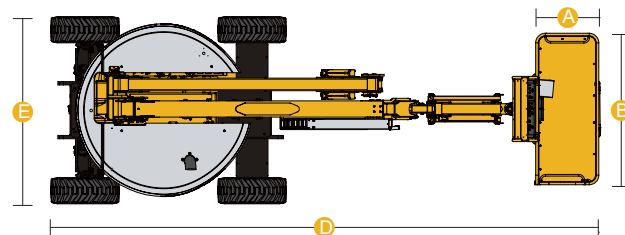
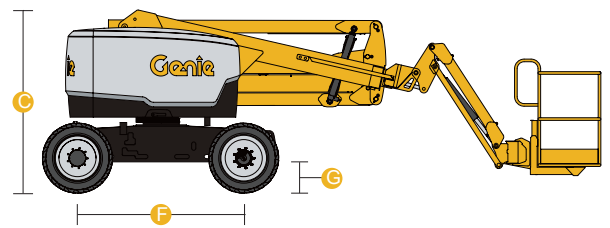
Weight and Floor Loading

Weight	16,300lb	7,394kg
Tire contact pressure	80psi	552kPa
Occupied floor pressure (tires)	230psf	11.01kPa

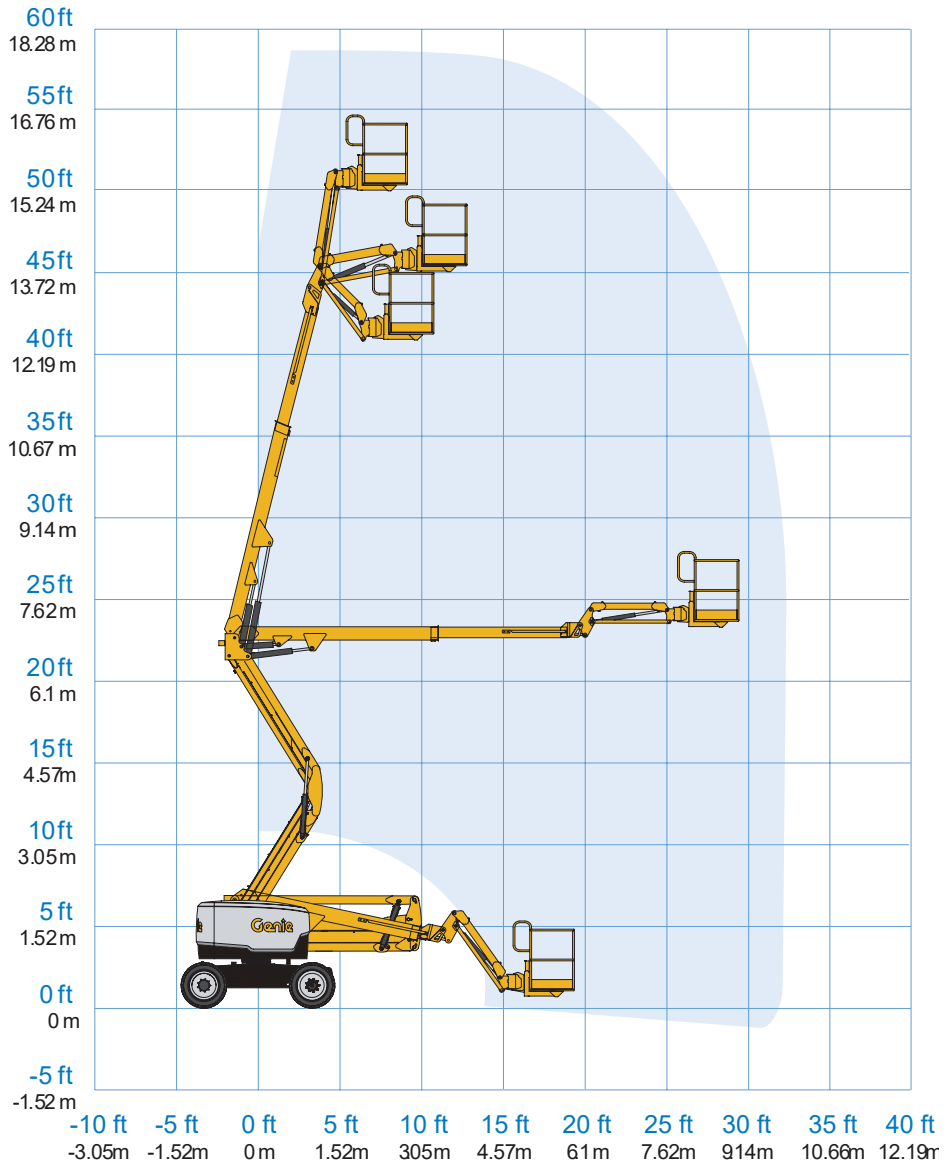
Sound and Vibration Levels

Sound Pressure level (ground workstation)	86dBA
Sound Pressure level (platform workstation)	79dBA

Vibrations	8ft 2in/s ²	2.5m/s ²
------------	------------------------	---------------------



Reach Diagrams



BVM Transport LLC.
 Plot No. 5330288, Near Roundabout
 No. 7, Dubai Industrial City (DIC),
 PO Box 18377, Dubai, UAE.

info@bvmtransport.com
 +971 4 874 7999
 +971 54 581 4833

